

TANDA Curtain Type Fire Damper

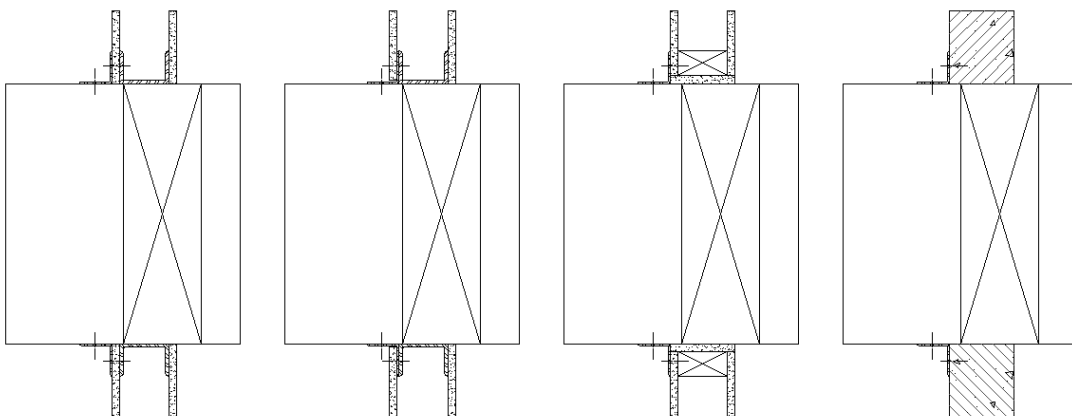
- Tested to BS 476 part 20 standard,1987
- Up to 4 hours fire rating
- Single side installation method
- Light weight
- Easy to install, save time & money
- Tailor made
- GMS/304/316 different material construction of the frame/blade
- Application
 - Wall (concrete masonry, drywall, brick wall)
 - Floor
 - Fire Rating Partition
 - Louver Opening
 - Fire Door Grilles
 - Kitchen Window For Passing Food

1.Metal Stud

2.Under Dry Wall
(Metal Stud Only)

3.Wood Stud

4.Concrete/
Masonry



TANDA TFD Series Curtain Type

Fire Damper

TFD-100 TYPE A

DAMPER CONSTRUCTION

- Integral Frame Sleeve : 1mm Galvanized Mild Steel without spring / 1.5mm Galvanized Mild Steel with spring
- Blade : 0.6mm Galvanized Mild Steel Roll Formal curtain blade
- Outer Sleeve : 1mm Galvanized Mild steel
- Fusible Link : 68 degree C (155 degree F, UL listed)
- Spring : Stainless Steel Closure Spring (Optional for Vertical only)

Minimum Size

100 x 100mm

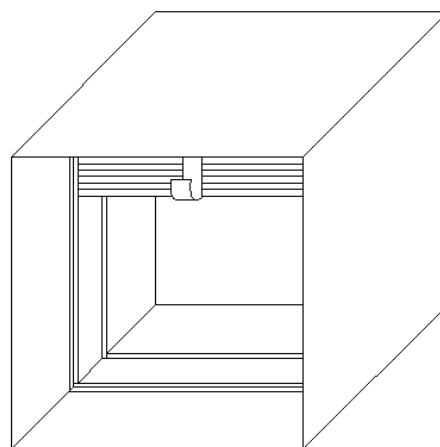
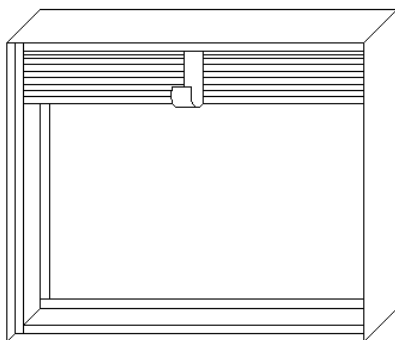
Larger Size

Single Section 1100 x 1200mm

Multiple Sections 2660 x 2000mm

Fire Rating

BS 476 part 20 standard, up to 4 hours



Optional Construction

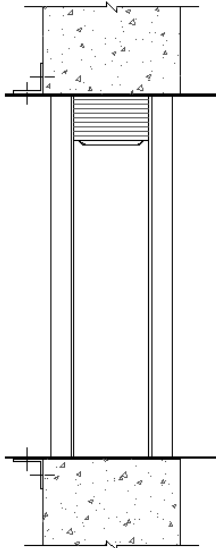
- GMS Frame with GMS/304/316 Stainless Steel Blades or GMS/304/316 Sleeve
- 304/316 Stainless Steel Frames and Blades or GMS/304/316 Sleeve

Frame	GI	GI	304	304	GI	316	316
Blade	GI	304	304	304	316	316	316
Sleeve	GI	GI	GI	304	GI	GI	316

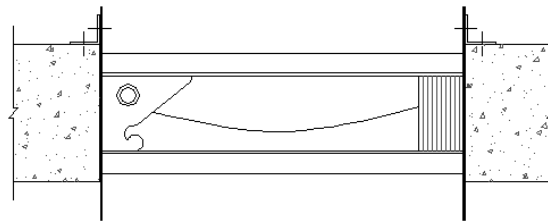
- Mounted with 69 degree C ETL
- Suitable install as vertical or horizontal at concrete masonry, drywall, brick wall, fire rating partition, door grilles, louver opening, kitchen window for passing food

Installation

Vertical Mounting



Horizontal Mounting



TANDA TFD Series Curtain Type

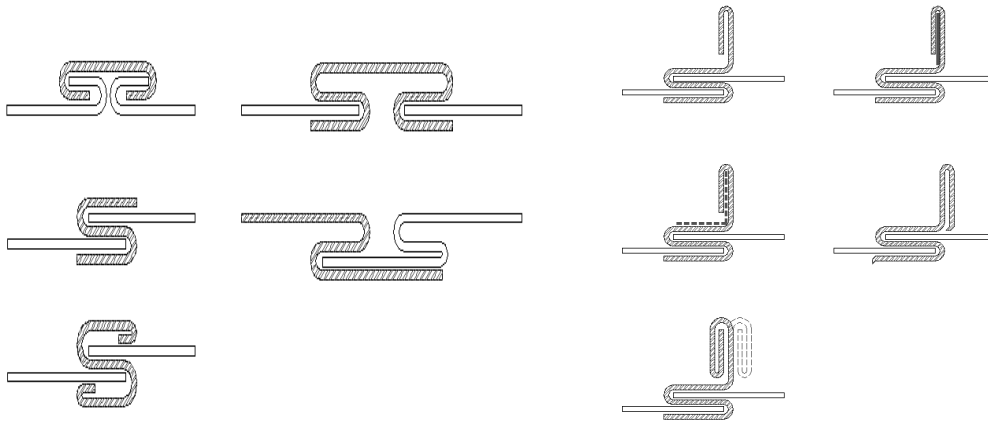
Fire Damper Duct /Sleeve Connections

Break-away Duct/ Sleeve Connections

Is according to UL555 listed requirement for both vertical and horizontal mounting.

One of the connections must be use between fire damper sleeve and air duct

"S" Slip Jointing



Breakaway joints of the types shown as above shall have no more than two No.10 (4.8mm diameter) sheet metal screws on each side and the bottom, located in the center of the slip pocket and shall penetrate both sides of the slip pockets.

Connection are permitted on the top and bottom of vertical / horizontal duct with flat drive slips not exceeding 20 inches (508mm) in length.

Round or flat oval spiral ducts attached to round or oval collars breakaway joints when attached with No.10 (4.8mm diameter) sheet metal screws spaced equally around the circumference of the duct as follow:

- Duct diameter 22 inches (559mm) and smaller shall have three screws.
- Duct diameter greater than 22 inches up and including 36 inches (914mm) shall have five screws.

TANDA SINGLE SIDE ANGLE

TANDA SINGLE SIDE ANGLE is a tested installation method
Angle is fastened directly to the concrete or masonry or brick wall
/ stud through the fire rated board or floor

TFD-100

Vertical mounting

Fasteners for angle to wall

- angle minimum 40 x 40 x 1.5mm fastened to the concrete or masonry wall/ stud through the fire rated board with minimum 25mm overlap
- #10 (M5) minimum anchor bolts/ #10(M5) minimum self-drilling screws/ #10(M5) minimum self-tapping screws
- fasteners shall maximum 50mm from edge, maximum 300mm center to center
- minimum of 2 fasteners on each side

Angle to sleeve

- spot welds or minimum 13mm long tack welds/ #10(M5) minimum self-drilling screws/ #10(M5) minimum bolts and nuts/ #10(M5) minimum steel pop rivets/ #10(M5) minimum self-tapping screws
- fasteners shall maximum 50mm from edge, maximum 300mm center to center
- minimum of 2 fasteners on each side

Horizontal mounting

Fasteners for angle to floor

- angle maximum 40 x 75 x 1.5mm to concrete floor / stud through fire rated board with minimum 25mm overlap
- #10 (M5) minimum anchor bolts/#10(M5) minimum self-drilling screws/ #10(M5) minimum self-tapping screws
- fasteners shall maximum 50mm from edge, maximum 150mm center to center
- minimum of 2 fasteners on each side

Angle to sleeve

- spot welds or minimum 13mm long tack welds/ #10(M5) minimum self-drilling screws/ #10(M5) minimum bolts and nuts/ # 10(M5) minimum steel pop rivets/ #10(M5) minimum self-tapping screws
- fasteners shall maximum 50mm from edge, maximum 150mm center to center
- minimum of 2 fasteners on each side

TFD-200

Mounting Method

- Z-Channel minimum (30 x 85 x 30) x 3mm
- #10 (M5) minimum anchor bolts/spot welds or minimum 13mm long tack welds/ #10(M5) minimum self-drilling screws/ #10(M5) minimum self-tapping screws
- fasteners shall maximum 50mm from edge, maximum 300mm center to center
- minimum of 2 fasteners on each side

TANDA TFD Series Curtain Type

Fire Damper & Sleeve

ATTACHING FIRE DAMPERS TO SLEEVES

Fire dampers must be attached to sleeve with all four sides of the damper frame

One of the methods of attachment for single/multiple sections fire damper/ sleeve shown below must be used

- spot welds or minimum 13mm long tack welds
- #10 (M5) minimum self-drilling screws
- #10 (M5) minimum bolts and nuts
- #10 (M5) minimum steel pop rivets
- #10 (M5) minimum self-tapping screws

Vertical mounting

Maximum of 50mm from the ends 300mm on centers

Horizontal mounting

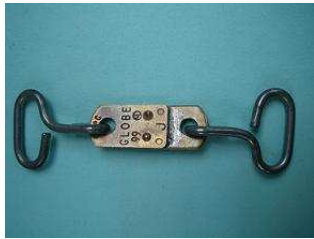
Maximum of 50mm from the ends 150mm on centers



TANDA INTERNATIONAL COMPANY LTD.

UL listed 68 degree C fusible link

- .Special designed for standard fire dampers
- .Clover hooks made of galvanized wire material
- .Ease of installation
- .Fusible links are manufactured and tested in accordance with applicable standards of Underwriters Laboratories, Inc,



Brand : Globe

Model : JS

Feature :

Fusible link is UL listed

Temperature is 155 degree F (68 degree C)